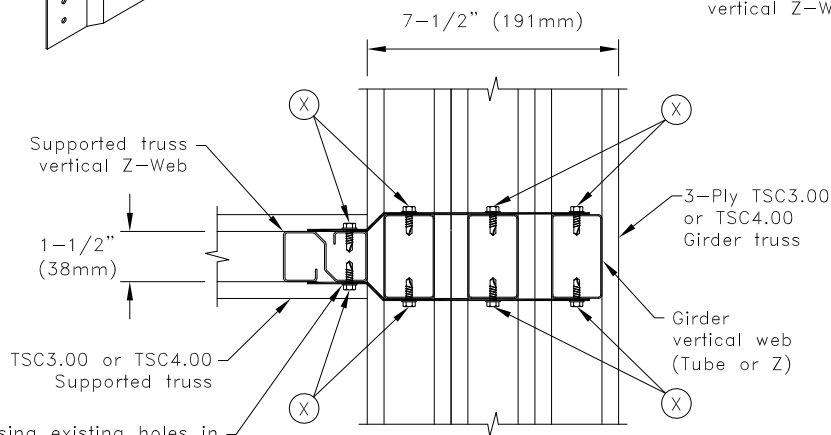
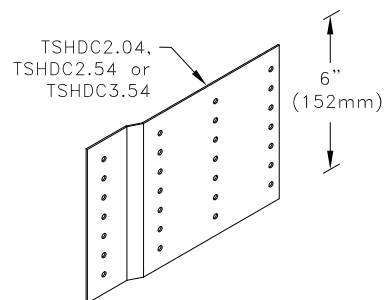


Typical Supported Truss to Girder Connection



If using existing holes in TSHDC clip causes screws to not go through Z-Web, apply #10SDS into sides of TSHDC and through Z-Web so they are no closer than 9/32" from existing TSHDC holes.

If width of girder vertical web is:
2" (51mm) use clip TSHDC2.04
2-1/2" (64mm) use clip TSHDC2.54
3-1/2" (90mm) use clip TSHDC3.54

Allowable Reaction and Uplift lbs (kN)	
X ^A	H = 24 in. (610mm) minimum
	R = U lbs (kN)
5	3000 (13.34)
6	4000 (17.79)
7	4700 (20.91)

A. The quantity "X" refers to the number of #10SDS (Self-Drilling Tapping Screws) that are required on each side of each clip into the web member.

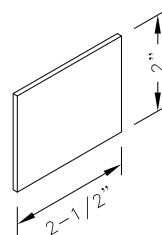
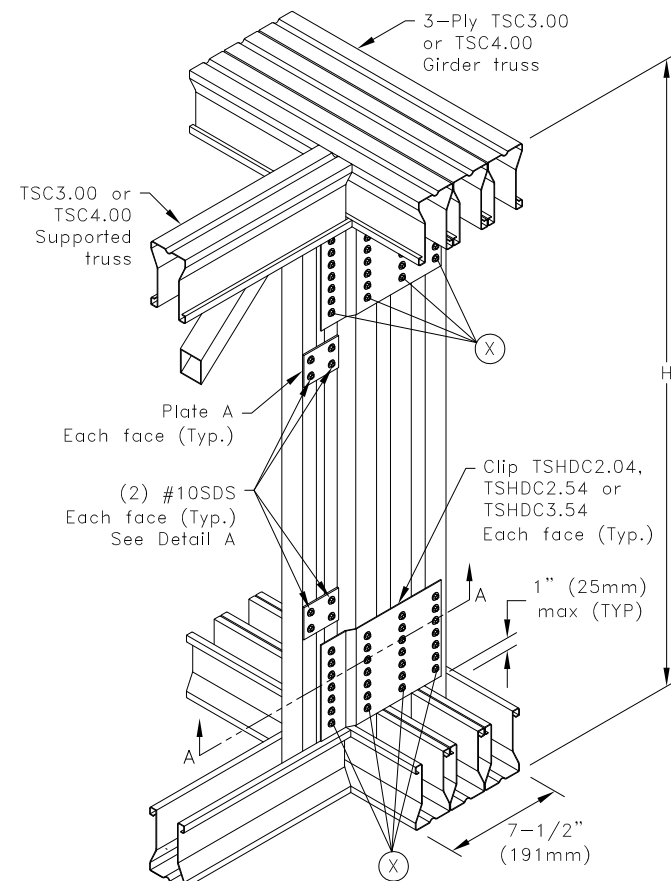
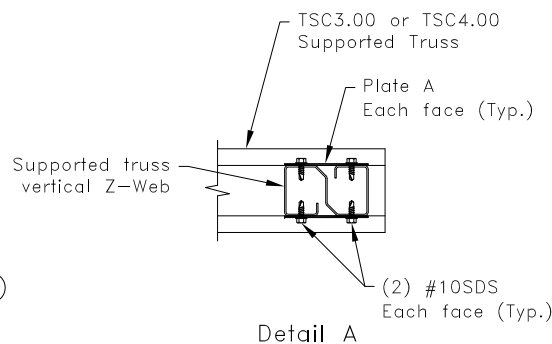


Plate A
16g ASTM A653 SS Grade 33 Class 1 G60
Bare Metal Thickness: $t = 0.0538"$



General Notes:

- Supplemental Plates A are not required when truss vertical reaction is 2000 lbs or less.
- The top and bottom chords of all trusses shall be properly connected to structural sheathing or purlins., designed by others.
- Screw spacing, edge distance and end distance is 9/16" (14mm) minimum, except as noted.
- The supported truss must be designed utilizing a clip bearing type.
- R = Allowable Reaction and U = Allowable Uplift, at each clip location.
- Cold-Formed Steel Calculations are per the 2010 supplement to the AISI 2007 "North American Specifications for the Design of Cold-Formed Steel Structural Members" (S100-07/S2-10).

TrusSteel®

www.TrusSteel.com

Florida: 1950 Marley Drive / Haines City, FL 33844 / (800) 755-6001
Missouri: 13389 Lakefront Drive / Earth City, MO 63045 / (800) 326-4102

Heavy TSC3.00 or TSC4.00
Truss-To-Truss Connection
(3 Ply Girder) 2-1/2" Z-Webs

ITW Building Components Group, Inc. shall not be responsible for any performance failure in a connection due to a deviation from this detail. Any variation from this detail shall be approved in advance by ITW Building Components Group, Inc.

Custom Detail:

CD120814

Date:

08/24/12

Custom Detail Category:

Truss-To-Truss Connections